

beta-Actin Ab

Cat.#: BF0198 Concn.: 1mg/ml Mol.Wt.: 43KD
Size: 1ml,200ul,100ul,50ul Source: Mouse Clonality: Monoclonal

Application: ELISA 1/10000, WB 1/500 - 1/2000, ICC 1/200 - 1/1000, FCM 1/200 - 1/400

Reactivity: Human,Mouse,Rat,Monkey,Hamster

Purification: Affinity-chromatography.

Specificity: beta-Actin Ab detects endogenous levels of total beta-Actin.

Immunogen: Purified recombinant fragment of human beta-Actin expressed in E. Coli.

Uniprot: P60709

Description: Beta-actin (PS1TP5-binding protein 1), also known as ACTB, PS1TP5BP1. Entrez Protein NP_001092. It is one of six different actin proteins. Actin, a ubiquitous eukaryotic protein, is the major component of the cytoskeleton. Actins are highly conserved proteins that are involved in various types of cell motility, structure, and integrity. Actin is ubiquitously expressed in all eukaryotic cells. This actin is a major constituent of the contractile apparatus and one of the two nonmuscle cytoskeletal actins.

Subcellular Location: Cytoplasm > cytoskeleton. Localized in cytoplasmic mRNP granules containing untranslated mRNAs.

Similarity: Belongs to the actin family.

Storage Condition and Buffer: Mouse IgG1 in phosphate buffered saline (without Mg²⁺ and Ca²⁺), pH 7.4, 150mM NaCl, 0.02% sodium azide and 50% glycerol. Store at -20 °C. Stable for 12 months from date of receipt.

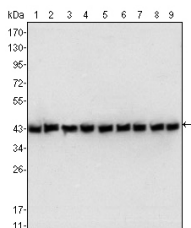
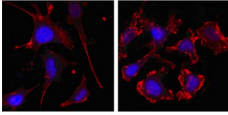


Figure 1: Western blot analysis using beta-Actin mouse mAb against NIH/3T3 (1), Jurkat (2), Hela (3), CHO (4), PC12 (5), HEK293 (6), COS (7), A549 (8) and MCF-7 (9) cell lysate.



Confocal immunofluorescence analysis of SKBR-3 (left) and A549 (right) cells using beta Actin mouse mAb (red), the secondary Ab is Cy3-Goat anti mouse IgG). Blue: DRAQ5 fluorescent DNA dye.

IMPORTANT: For western blot, incubate membrane with diluted primary Ab in 5% w/v milk , 1X TBS, 0.1% Tween@20 at 4°C with gentle shaking, overnight.

For Research Use Only. Not for use in diagnostic and therapeutic procedures. Not for resale without express authorization.