

PRK2 Ab

Cat.#: BF0214
Size: 50ul,100ul,200ul

Concn.: 1mg/ml
Source: Mouse

Mol.Wt.: 140kDa
Clonality: Monoclonal

Application:	ELISA 1/10000, WB 1/500 - 1/2000, IHC 1/200 - 1/1000, FCM 1/200 - 1/400
Reactivity:	Human,Mouse,Rat,Monkey
Purification:	Affinity-chromatography.
Specificity:	PRK2 Ab detects endogenous levels of total PRK2.
Immunogen:	Purified recombinant fragment of human PRK2 expressed in E. Coli.
Uniprot:	Q16513
Description:	Protein-kinase-C-related kinases (PRKs) are part of the lipid-regulated protein kinases (PKC) which also include liver PAK & PKN. Human PRK1 and PRK2 share structurally similar catalytic domains, but less similar N-terminal regulatory regions suggesting different regulatory domain functions. PRK1 and PRK2, as well as a third member of this family, PRK3, show distinct patterns of expression in adult tissues. Additionally, the serine-threonine kinase PRK2 can be specifically cleaved by caspase-3 (and/or caspase-3-like subfamily members) during apoptosis.
Subcellular Location:	Cytoplasm.
Tissue Specificity:	Ubiquitous. Expressed in numerous tumor cell lines, especially in bladder tumor cells.
Similarity:	The N-terminal region interferes with the interaction between AKT1 and the C-terminal region of PKN2. The C1 domain does not bind the diacylglycerol (DAG). The apoptotic C-terminal cleavage product inhibits EGF-induced kinase activity of AKT1 phosphorylation at 'Thr-308' and 'Ser-473' sites, PDK1 autophosphorylation and kinases PRKCD and PRKCZ phosphorylations. Belongs to the protein kinase superfamily. AGC Ser/Thr protein kinase family. PKC subfamily.
Storage Condition and Buffer:	Mouse IgG1 in phosphate buffered saline (without Mg ²⁺ and Ca ²⁺), pH 7.4, 150mM NaCl, 0.02% sodium azide and 50% glycerol. Store at -20 °C. Stable for 12 months from date of receipt.

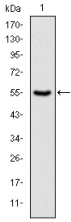


Figure 1: Western blot analysis using PRK2 mAb against human PRK2 (AA: 555-718) recombinant protein. (Expected MW is 43.9 kDa)

IMPORTANT: For western blot, incubate membrane with diluted primary Ab in 5% w/v milk , 1X TBS, 0.1% Tween@20 at 4°C with gentle shaking, overnight.

For Research Use Only. Not for use in diagnostic and therapeutic procedures. Not for resale without express authorization.