

KLK3 Ab

Cat.#: BF0240
Size: 50ul,100ul,200ul

Concn.: 1mg/ml
Source: Mouse

Mol.Wt.: 29kDa
Clonality: Monoclonal

Application:	ELISA 1/10000, WB 1/500 - 1/2000, FCM 1/200 - 1/400
Reactivity:	Human
Purification:	Affinity-chromatography.
Specificity:	KLK3 Ab detects endogenous levels of total KLK3.
Immunogen:	Purified recombinant fragment of human KLK3 expressed in E. Coli.
Uniprot:	P07288
Description:	<p>Kallikreins are a subgroup of serine proteases having diverse physiological functions. Growing evidence suggests that many kallikreins are implicated in carcinogenesis and some have potential as novel cancer and other disease biomarkers. This gene is one of the fifteen kallikrein subfamily members located in a cluster on chromosome 19. Its protein product is a protease present in seminal plasma. It is thought to function normally in the liquefaction of seminal coagulum, presumably by hydrolysis of the high molecular mass seminal vesicle protein. Serum level of this protein, called PSA in the clinical setting, is useful in the diagnosis and monitoring of prostatic carcinoma. Alternate splicing of this gene generates several transcript variants encoding different isoforms.</p>
Subcellular Location:	Secreted.
Similarity:	Belongs to the peptidase S1 family. Kallikrein subfamily.
Storage Condition and Buffer:	Mouse IgG1 in phosphate buffered saline (without Mg ²⁺ and Ca ²⁺), pH 7.4, 150mM NaCl, 0.02% sodium azide and 50% glycerol.Store at -20 °C.Stable for 12 months from date of receipt.

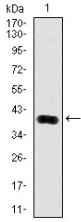


Figure 1: Western blot analysis using KLK3 mAb against human KLK3 (AA: 109-216) recombinant protein. (Expected MW is 37.2 kDa)

IMPORTANT: For western blot, incubate membrane with diluted primary Ab in 5% w/v milk , 1X TBS, 0.1% Tween@20 at 4°C with gentle shaking, overnight.

For Research Use Only. Not for use in diagnostic and therapeutic procedures. Not for resale without express authorization.