

PRDM1 Ab

Cat.#: BF0254
Size: 50ul,100ul,200ul

Concn.: 1mg/ml
Source: Mouse

Mol.Wt.: 88kDa
Clonality: Monoclonal

Application:	ELISA 1/10000, WB 1/500 - 1/2000
Reactivity:	Human,Mouse
Purification:	Affinity-chromatography.
Specificity:	PRDM1 Ab detects endogenous levels of total PRDM1.
Immunogen:	Purified recombinant fragment of human PRDM1 expressed in E. Coli.
Uniprot:	O75626
Description:	PRDM1/Blimp1 is a repressor of beta-interferon gene expression. This action is exerted by binding to the PRDI (positive regulatory domain I element) of the beta-IFN gene promoter. The transcription of this gene is increased upon virus induction. Two alternatively spliced transcript variants that encode different isoforms have been reported.
Subcellular Location:	Nucleus. Cytoplasm.
Similarity:	Belongs to the class V-like SAM-binding methyltransferase superfamily.
Storage Condition and Buffer:	Mouse IgG1 in phosphate buffered saline (without Mg ²⁺ and Ca ²⁺), pH 7.4, 150mM NaCl, 0.02% sodium azide and 50% glycerol.Store at -20 °C.Stable for 12 months from date of receipt.

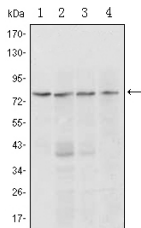


Figure 1: Western blot analysis using PRDM1 mouse mAb against Raji (1, 2), L1210 (3) and TPH-1 (4) cell lysate.

IMPORTANT: For western blot, incubate membrane with diluted primary Ab in 5% w/v milk , 1X TBS, 0.1% Tween@20 at 4°C with gentle shaking, overnight.



Affinity Biosciences
website: www.affbiotech.com
order: order@affbiotech.com

procedures. Not for resale without express authorization.