

BNP Ab

Cat.#: BF0264
Size: 50ul,100ul,200ulConcn.: 1mg/ml
Source: MouseMol.Wt.: 15kDa
Clonality: Monoclonal

Application:	ELISA 1/10000, IHC 1/200 - 1/1000
Reactivity:	Human
Purification:	Affinity-chromatography.
Specificity:	BNP Ab detects endogenous levels of total BNP.
Immunogen:	Purified recombinant fragment of human BNP expressed in E. Coli.
Uniprot:	P16860
Description:	BNP (brain natriuretic peptide) belongs to a family of structurally similar peptide hormones, which includes atrial natriuretic peptide (ANP), BNP, C-type natriuretic peptide (CNP) and urodilatin. ANP and BNP act mainly as cardiac hormones, produced primarily by the atrium and ventricle, respectively, while the gene encoding C-type natriuretic peptide is expressed mainly in the brain. BNP circulates in blood as a peptide hormone with natriuretic, vasodilatory and renin inhibitory properties. It is secreted predominantly by the left ventricular myocytes in response to volume expansion and pressure overload. These peptides are characterized by a common 17 amino acid ring structure with a disulfide bond between two cystein residues. This ring structure shows high homology between different natriuretic.
Subcellular Location:	Secreted
Tissue Specificity:	Brain and also in atria, but at much lower levels than ANP.
Similarity:	Belongs to the natriuretic peptide family.
Storage Condition and Buffer:	Mouse IgG1 in phosphate buffered saline (without Mg ²⁺ and Ca ²⁺), pH 7.4, 150mM NaCl, 0.02% sodium azide and 50% glycerol.Store at -20 °C.Stable for 12 months from date of receipt.

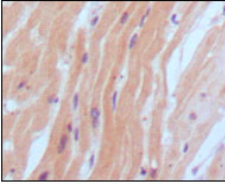


Figure 1: Immunohistochemical analysis of paraffin-embedded human normal myocardium, showing cytoplasmic localization using BNP2 mouse mAb with DAB staining.

IMPORTANT: For western blot, incubate membrane with diluted primary Ab in 5% w/v milk , 1X TBS, 0.1% Tween@20 at 4°C with gentle shaking, overnight.

For Research Use Only. Not for use in diagnostic and therapeutic procedures. Not for resale without express authorization.