

PDK1 Ab

Cat.#: BF0312
Size: 50ul,100ul,200ul

Concn.: 1mg/ml
Source: Mouse

Mol.Wt.: 44kDa
Clonality: Monoclonal

Application:	ELISA 1/10000, WB 1/500 - 1/2000, IHC 1/200 - 1/1000, ICC 1/200 - 1/1000, FCM 1/200 - 1/400
Reactivity:	Human,Rat,Monkey
Purification:	Affinity-chromatography.
Specificity:	PDK1 Ab detects endogenous levels of total PDK1.
Immunogen:	Purified recombinant fragment of human PDK1 expressed in E. Coli.
Uniprot:	Q15118
Description:	Pyruvate dehydrogenase (PDH) is a mitochondrial multienzyme complex that catalyzes the oxidative decarboxylation of pyruvate and is one of the major enzymes responsible for the regulation of homeostasis of carbohydrate fuels in mammals. The enzymatic activity is regulated by a phosphorylation/dephosphorylation cycle. Phosphorylation of PDH by a specific pyruvate dehydrogenase kinase (PDK) results in inactivation. (provided by RefSeq). Tissue specificity: Expressed predominantly in the heart.
Subcellular Location:	Mitochondrion matrix.
Tissue Specificity:	Expressed predominantly in the heart. Detected at lower levels in liver, skeletal muscle and pancreas.
Similarity:	Belongs to the PDK/BCKDK protein kinase family.
Storage Condition and Buffer:	Mouse IgG1 in phosphate buffered saline (without Mg ²⁺ and Ca ²⁺), pH 7.4, 150mM NaCl, 0.02% sodium azide and 50% glycerol.Store at -20 °C.Stable for 12 months from date of receipt.

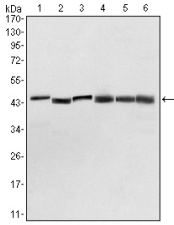


Figure 1: Western blot analysis using PDK1 mouse mAb against NIH/3T3 (1), Hela (2), Jurkat (3), HepG2 (4), PC-12 (5), and Cos7 (6) cell lysate.

IMPORTANT: For western blot, incubate membrane with diluted primary Ab in 5% w/v milk , 1X TBS, 0.1% Tween@20 at 4°C with gentle shaking, overnight.

For Research Use Only. Not for use in diagnostic and therapeutic procedures. Not for resale without express authorization.