

## CD19 Ab

Cat.#: BF0411  
Size: 50ul,100ul,200ul

Concn.: 1mg/ml  
Source: Mouse

Mol.Wt.: 61kDa  
Clonality: Monoclonal

Application:	ELISA 1/10000, ICC 1/200 - 1/1000, FCM 1/200 - 1/400
Reactivity:	Human
Purification:	Affinity-chromatography.
Specificity:	CD19 Ab detects endogenous levels of total CD19.
Immunogen:	Purified recombinant fragment of human CD19 expressed in E. Coli.
Uniprot:	P15391
Description:	The CD19 antigen (95kDa) is expressed from the earliest stage of B progenitor development, on all peripheral B cells including germinal centre B cells, and all B cell lines and B cell leukaemia tested. T cell and monocytic cell lines are negative and the antigen is lost on B cell maturation to plasma cells. The antigen is a type I integral membrane glycoprotein whose in vitro inhibition will influence B cell activation and proliferation.
Subcellular Location:	Membrane.
Storage Condition and Buffer:	Mouse IgG1 in phosphate buffered saline (without Mg <sup>2+</sup> and Ca <sup>2+</sup> ), pH 7.4, 150mM NaCl, 0.02% sodium azide and 50% glycerol.Store at -20 °C.Stable for 12 months from date of receipt.

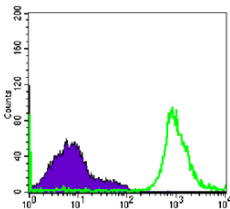


Figure 1: Flow cytometric analysis of Raji cells using CD19 mouse mAb (green) and negative control (purple).

**IMPORTANT:** For western blot, incubate membrane with diluted primary Ab in 5% w/v milk , 1X TBS, 0.1% Tween@20 at 4°C with gentle shaking, overnight.