

ABL1 Ab

Cat.#: BF0419
Size: 50ul,100ul,200ul

Concn.: 1mg/ml
Source: Mouse

Mol.Wt.: 122kDa
Clonality: Monoclonal

Application:	ELISA 1/10000, WB 1/500 - 1/2000
Reactivity:	Human,Monkey
Purification:	Affinity-chromatography.
Specificity:	ABL1 Ab detects endogenous levels of total ABL1.
Immunogen:	Purified recombinant fragment of human ABL1 expressed in E. Coli.
Uniprot:	P00519/P42684
Description:	<p>The ABL1 protooncogene encodes a cytoplasmic and nuclear protein tyrosine kinase that has been implicated in processes of cell differentiation, cell division, cell adhesion, and stress response. Activity of c-Abl protein is negatively regulated by its SH3 domain, and deletion of the SH3 domain turns ABL1 into an oncogene. The t(9;22) translocation results in the head-to-tail fusion of the BCR (MIM:151410) and ABL1 genes present in many cases of chronic myelogeneous leukemia. The DNA-binding activity of the ubiquitously expressed ABL1 tyrosine kinase is regulated by CDC2-mediated phosphorylation, suggesting a cell cycle function for ABL1. The ABL1 gene is expressed as either a 6- or 7-kb mRNA transcript, with alternatively spliced first exons spliced to the common exons 2-11./ABL2 is a cytoplasmic tyrosine kinase which is closely related to but distinct from ABL1. The similarity of the proteins includes the tyrosine kinase domains and extends amino-terminal to include the SH2 and SH3 domains. ABL2 is expressed in both normal and tumor cells. The ABL2 gene product is expressed as two variants bearing different amino termini, both approximately 12-kb in length.</p>
Subcellular Location:	Cytoplasm > cytoskeleton. Nucleus. Sequestered into the cytoplasm through interaction with 14-3-3 proteins and Nucleus membrane. The myristoylated c-ABL protein is reported to be nuclear.
Tissue Specificity:	Widely expressed.
Similarity:	Belongs to the protein kinase superfamily. Tyr protein kinase family. ABL subfamily.
Storage Condition and	Mouse IgG1 in phosphate buffered saline (without Mg2+ and

Buffer:

Ca²⁺), pH 7.4, 150mM NaCl, 0.02% sodium azide and 50% glycerol. Store at -20 °C. Stable for 12 months from date of receipt.

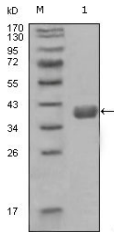


Figure 1: Western blot analysis using ABL1 mouse mAb against truncated GST-ABL1 recombinant protein (1).

IMPORTANT: For western blot, incubate membrane with diluted primary Ab in 5% w/v milk, 1X TBS, 0.1% Tween@20 at 4°C with gentle shaking, overnight.

For Research Use Only. Not for use in diagnostic and therapeutic procedures. Not for resale without express authorization.