

## GOT2 Ab

Cat.#: BF0444  
Size: 50ul,100ul,200ul

Concn.: 1mg/ml  
Source: Mouse

Mol.Wt.: 47kDa  
Clonality: Monoclonal

Application:	ELISA 1/10000, WB 1/500 - 1/2000, ICC 1/200 - 1/1000
Reactivity:	Human,Mouse,Rat,Monkey
Purification:	Affinity-chromatography.
Specificity:	GOT2 Ab detects endogenous levels of total GOT2.
Immunogen:	Purified recombinant fragment of human GOT2 expressed in E. Coli.
Uniprot:	P00505
Description:	Glutamic-oxaloacetic transaminase is a pyridoxal phosphate-dependent enzyme which exists in cytoplasmic and inner-membrane mitochondrial forms, GOT1 and GOT2, respectively. GOT plays a role in amino acid metabolism and the urea and tricarboxylic acid cycles. The two enzymes are homodimeric and show close homology.
Subcellular Location:	Mitochondrion matrix. Cell membrane. Exposure to alcohol promotes translocation to the cell membrane.
Tissue Specificity:	Up-regulated by long-time exposure to alcohol.
Similarity:	Belongs to the class-I pyridoxal-phosphate-dependent aminotransferase family.
Storage Condition and Buffer:	Mouse IgG1 in phosphate buffered saline (without Mg <sup>2+</sup> and Ca <sup>2+</sup> ), pH 7.4, 150mM NaCl, 0.02% sodium azide and 50% glycerol.Store at -20 °C.Stable for 12 months from date of receipt.

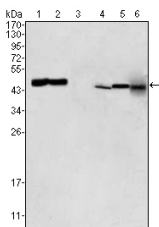
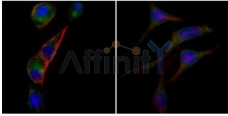


Figure 1: Western blot analysis using GOT2 mouse mAb against HEK293 (1), PC-12 (2), HL-60 (3), BCBL-1 (4), HepG2 (5) and NIH/3T3 (6) cell lysate.



Immunofluorescence analysis of PC-3 (left) and SK-BR-3 (right) cells using anti-GOT2 mAb (green). Red: Actin filaments have been labeled with DY-554 phalloidin. Blue: DRAQ5 fluorescent DNA dye.

**IMPORTANT:** For western blot, incubate membrane with diluted primary Ab in 5% w/v milk , 1X TBS, 0.1% Tween@20 at 4°C with gentle shaking, overnight.

For Research Use Only. Not for use in diagnostic and therapeutic procedures. Not for resale without express authorization.