

WIF1 Ab

Cat.#: BF0534
Size: 50ul,100ul,200ul

Concn.: 1mg/ml
Source: Mouse

Mol.Wt.: 42kDa
Clonality: Monoclonal

Application: ELISA 1/10000, WB 1/500 - 1/2000, IHC 1/200 - 1/1000, ICC 1/200 - 1/1000

Reactivity: Human

Purification: Affinity-chromatography.

Specificity: WIF1 Ab detects endogenous levels of total WIF1.

Immunogen: Purified recombinant fragment of human WIF1 expressed in E. Coli.

Uniprot: Q9Y5W5

Description: The protein encoded by this gene functions to inhibit WNT proteins, which are extracellular signaling molecules that play a role in embryonic development. This protein contains a WNT inhibitory factor (WIF) domain and five epidermal growth factor (EGF)-like domains, and is thought to be involved in mesoderm segmentation. This gene functions as a tumor suppressor gene, and has been found to be epigenetically silenced in various cancers.

Subcellular Location: Secreted.

Storage Condition and Buffer: Mouse IgG1 in phosphate buffered saline (without Mg²⁺ and Ca²⁺), pH 7.4, 150mM NaCl, 0.02% sodium azide and 50% glycerol.Store at -20 °C.Stable for 12 months from date of receipt.

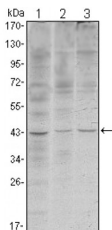
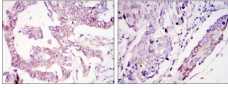
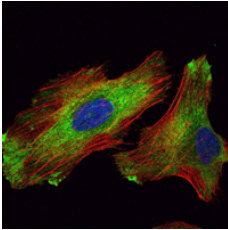


Figure 1: Western blot analysis using WIF1 mouse mAb against HeLa (1), NIH/3T3 (2) and NTERA-2 (3) cell lysate.



Immunohistochemical analysis of paraffin-embedded ovary tumour tissues (left) and lung cancer (right) using WIF1 mouse mAb with DAB staining.



Immunofluorescence analysis of HeLa cells using WIF1 mouse mAb (green). Red: Actin filaments have been labeled with Alexa Fluor-555 phalloidin.

IMPORTANT: For western blot, incubate membrane with diluted primary Ab in 5% w/v milk , 1X TBS, 0.1% Tween@20 at 4°C with gentle shaking, overnight.

For Research Use Only. Not for use in diagnostic and therapeutic procedures. Not for resale without express authorization.