

## human Albumin Ab

Cat.#: BF0544	Concn.: 1mg/ml	Mol.Wt.: 69kDa
Size: 50ul,100ul,200ul	Source: Mouse	Clonality: Monoclonal

Application:	ELISA 1/10000, WB 1/500 - 1/2000
Reactivity:	Human
Purification:	Affinity-chromatography.
Specificity:	human Albumin Ab detects endogenous levels of total human Albumin.
Immunogen:	Purified recombinant fragment of human human Albumin expressed in E. Coli.
Uniprot:	P02768
Description:	Albumin is a soluble, monomeric protein which comprises about one-half of the blood serum protein. Albumin functions primarily as a carrier protein for steroids, fatty acids, and thyroid hormones and plays a role in stabilizing extracellular fluid volume. Albumin is a globular unglycosylated serum protein of molecular weight 65,000. Albumin is synthesized in the liver as prealbumin which has an N-terminal peptide that is removed before the nascent protein is released from the rough endoplasmic reticulum. The product, proalbumin, is in turn cleaved in the Golgi vesicles to produce the secreted albumin.
Subcellular Location:	Secreted.
Tissue Specificity:	Plasma.
Similarity:	Belongs to the ALB/AFP/VDB family.
Storage Condition and Buffer:	Mouse IgG1 in phosphate buffered saline (without Mg <sup>2+</sup> and Ca <sup>2+</sup> ), pH 7.4, 150mM NaCl, 0.02% sodium azide and 50% glycerol.Store at -20 °C.Stable for 12 months from date of receipt.

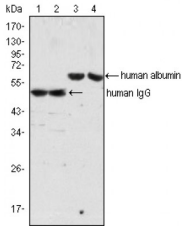


Figure 1: Western blot analysis using human Albumin mouse mAb (lane 3, 4) and human IgG mouse mAb(lane 1, 2) against human serum (lane 1, 3) and plasma (lane 2, 4).

**IMPORTANT:** For western blot, incubate membrane with diluted primary Ab in 5% w/v milk , 1X TBS, 0.1% Tween@20 at 4°C with gentle shaking, overnight.

For Research Use Only. Not for use in diagnostic and therapeutic procedures. Not for resale without express authorization.