

PRAK Ab

Cat.#: BF0548
Size: 50ul,100ul,200ul

Concn.: 1mg/ml
Source: Mouse

Mol.Wt.: 55kDa
Clonality: Monoclonal

Application:	ELISA 1/10000, WB 1/500 - 1/2000, IHC 1/200 - 1/1000
Reactivity:	Human
Purification:	Affinity-chromatography.
Specificity:	PRAK Ab detects endogenous levels of total PRAK.
Immunogen:	Purified recombinant fragment of human PRAK expressed in E. Coli.
Uniprot:	Q8IW41
Description:	<p>PRAK (p38-regulated /activated kinase), also referred to as mitogen-activated protein kinase (MAPK)-activated protein kinase (MAPKAPK)-5, is an ubiquitously expressed serine/threonine kinase regulated by p38α and p38beta MAP kinases. Activated JNK, p38gamma or p38δ are unable to induce phosphorylation of PRAK in vitro. Phosphorylation of PRAK occurs in vivo in response to p38 activation by stress-related extracellular stimuli including UV light, oxidation and proinflammatory cytokines. Two other substrates for p38, MAPKAPK-2 and MAPKAPK-3/3pK, share approximately 45% sequence homology with PRAK including the phosphorylation motif recognized by p38, Lys-X-Thr-Pro. Activated PRAK has been shown to specifically phosphorylate HSP 27 in vitro, suggesting that the protein may play a role in stress-induced small heat shock protein phosphorylation in vivo.</p>
Subcellular Location:	Cytoplasm. Nucleus. Also observed in the nucleus.
Tissue Specificity:	Expressed ubiquitously.
Similarity:	Belongs to the protein kinase superfamily. CAMK Ser/Thr protein kinase family.
Storage Condition and Buffer:	Mouse IgG1 in phosphate buffered saline (without Mg ²⁺ and Ca ²⁺), pH 7.4, 150mM NaCl, 0.02% sodium azide and 50% glycerol.Store at -20 °C.Stable for 12 months from date of receipt.

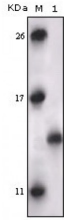


Figure 1: Western blot analysis using PRAK mouse mAb against truncated PRAK recombinant protein.

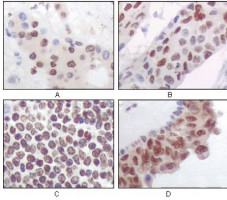


Figure 2: Immunohistochemical analysis of paraffin-embedded human liver carcinoma (A), esophagus carcinoma (B), normal spleen tissue(C), breast carcinoma (D), showing nuclear and cytoplasmic localization using PRAK mouse mAb with DAB staining.

IMPORTANT: For western blot, incubate membrane with diluted primary Ab in 5% w/v milk , 1X TBS, 0.1% Tween@20 at 4°C with gentle shaking, overnight.

For Research Use Only. Not for use in diagnostic and therapeutic procedures. Not for resale without express authorization.