

TUBB3 Ab

Cat.#: BF0572
Size: 50ul,100ul,200ul

Concn.: 1mg/ml
Source: Mouse

Mol.Wt.: 50kDa
Clonality: Monoclonal

Application:	ELISA 1/10000, WB 1/500 - 1/2000, ICC 1/200 - 1/1000, FCM 1/200 - 1/400
Reactivity:	Human
Purification:	Affinity-chromatography.
Specificity:	TUBB3 Ab detects endogenous levels of total TUBB3.
Immunogen:	Purified recombinant fragment of human TUBB3 expressed in E. Coli.
Uniprot:	Q13509
Description:	<p>Tubulin, beta 3, also known as TUBB3. Tubulin is the major constituent of microtubules. It binds two moles of GTP, one at an exchangeable site on the beta chain and one at a non exchangeable site on the alpha-chain. Tubulin is a highly conserved protein with a molecular weight of ~50 kD. Microtubules play key roles in chromosome segregation in mitosis, intracellular transport, ciliary and flagellar bending, and structural support of the cytoskeleton. The two main tubulin isoforms, α- and beta-tubulin, are usually products of separate genes. The beta-tubulin family includes six expressed genes that produce the polypeptide isoforms known as Classes I through VI, each of which have a distinct pattern of expression. Class III beta-tubulin is found in neurons and mammalian testis cells and is widely used as a neuronal marker in developmental neurobiology, neoplasia, and stem cell research. Class III beta-tubulin expression in neuronal and neuroblastic tumors is differentiation dependent, and its expression in certain non-neuronal neoplasms has been associated with poor prognosis and/or resistance to chemotherapy.</p>
Subcellular Location:	Cytoplasm > cytoskeleton.
Tissue Specificity:	Expression is primarily restricted to central and peripheral nervous system. Greatly increased expression in most cancerous tissues.
Similarity:	The highly acidic C-terminal region may bind cations such as calcium. Belongs to the tubulin family.
Storage Condition and Buffer:	Mouse IgG1 in phosphate buffered saline (without Mg ²⁺ and Ca ²⁺), pH 7.4, 150mM NaCl, 0.02% sodium azide and 50%

glycerol.Store at -20 °C.Stable for 12 months from date of receipt.

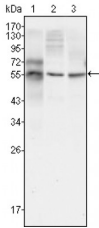


Figure 1: Western blot analysis using TUBB3 mouse mAb against HepG2 (1), A549 (2) and Hela (3) cell lysate.

IMPORTANT: For western blot, incubate membrane with diluted primary Ab in 5% w/v milk , 1X TBS, 0.1% Tween@20 at 4°C with gentle shaking, overnight.

For Research Use Only. Not for use in diagnostic and therapeutic procedures. Not for resale without express authorization.