

SNCA Ab

Cat.#: BF0582
Size: 50ul,100ul,200ul

Concn.: 1mg/ml
Source: Mouse

Mol.Wt.: 18kDa
Clonality: Monoclonal

Application:	ELISA 1/10000, WB 1/500 - 1/2000, IHC 1/200 - 1/1000
Reactivity:	Human
Purification:	Affinity-chromatography.
Specificity:	SNCA Ab detects endogenous levels of total SNCA.
Immunogen:	Purified recombinant fragment of human SNCA expressed in E. Coli.
Uniprot:	P37840
Description:	Alpha-synuclein is a member of the synuclein family, which also includes beta- and gamma-synuclein. Synucleins are abundantly expressed in the brain and alpha- and beta-synuclein inhibit phospholipase D2 selectively. SNCA may serve to integrate presynaptic signaling and membrane trafficking. Defects in SNCA have been implicated in the pathogenesis of Parkinson disease. SNCA peptides are a major component of amyloid plaques in the brains of patients with Alzheimer's disease. Two alternatively spliced transcripts of SNCA have been identified. Additional splicing may be present but the full-length nature of these variants has not been determined.
Subcellular Location:	Cytoplasm, cytosol. Membrane. Nucleus. Cell junction, synapse. Secreted. Membrane-bound in dopaminergic neurons.
Tissue Specificity:	Expressed principally in brain but is also expressed in low concentrations in all tissues examined except in liver. Concentrated in presynaptic nerve terminals.
Similarity:	The 'non A-beta component of Alzheimer disease amyloid plaque' domain (NAC domain) is involved in fibrils formation. The middle hydrophobic region forms the core of the filaments. The C-terminus may regulate aggregation and determine the diameter of the filaments.Belongs to the synuclein family.
Storage Condition and Buffer:	Mouse IgG1 in phosphate buffered saline (without Mg ²⁺ and Ca ²⁺), pH 7.4, 150mM NaCl, 0.02% sodium azide and 50% glycerol.Store at -20 °C.Stable for 12 months from date of receipt.

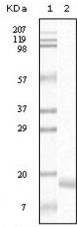


Figure 1: Western blot analysis using SNCA mouse mAb against truncated SNCA recombinant protein.

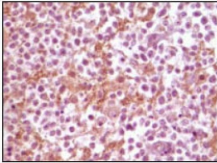


Figure 2: Immunohistochemical analysis of paraffin-embedded human glioma tissue, showing membrane localization using SNCA mouse mAb with DAB staining.

IMPORTANT: For western blot, incubate membrane with diluted primary Ab in 5% w/v milk , 1X TBS, 0.1% Tween@20 at 4°C with gentle shaking, overnight.

For Research Use Only. Not for use in diagnostic and therapeutic procedures. Not for resale without express authorization.