

PRKDC Ab

Cat.#: BF0594
Size: 50ul,100ul,200ul

Concn.: 1mg/ml
Source: Mouse

Mol.Wt.: 46.9kDa
Clonality: Monoclonal

Application:	ELISA 1/10000, WB 1/500 - 1/2000, IHC 1/200 - 1/1000, ICC 1/200 - 1/1000
Reactivity:	Human
Purification:	Affinity-chromatography.
Specificity:	PRKDC Ab detects endogenous levels of total PRKDC.
Immunogen:	Purified recombinant fragment of human PRKDC expressed in E. Coli.
Uniprot:	P78527
Description:	The PRKDC gene encodes the catalytic subunit of a nuclear DNA-dependent serine/threonine protein kinase (DNA-PK). The second component is the autoimmune antigen Ku (MIM 152690), which is encoded by the G22P1 gene on chromosome 22q. On its own, the catalytic subunit of DNA-PK is inactive and relies on the G22P1 component to direct it to the DNA and trigger its kinase activity; PRKDC must be bound to DNA to express its catalytic properties.
Subcellular Location:	Nucleus.
Similarity:	Belongs to the PI3/PI4-kinase family.
Storage Condition and Buffer:	Mouse IgG1 in phosphate buffered saline (without Mg ²⁺ and Ca ²⁺), pH 7.4, 150mM NaCl, 0.02% sodium azide and 50% glycerol.Store at -20 °C.Stable for 12 months from date of receipt.

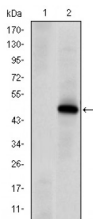
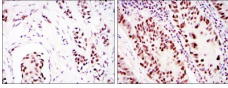
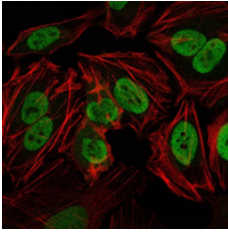


Figure 1: Western blot analysis using PRKDC mAb against HEK293 (1) and PRKDC(AA: 2638-2971)-hIgGfC transfected HEK293 (2) cell lysate.



Immunohistochemical analysis of paraffin-embedded breast cancer (left) and colon cancer (right) using PRKDC mouse mAb with DAB staining.



Immunofluorescence analysis of HeLa cells using PRKDC mouse mAb (green). Red: Actin filaments have been labeled with Alexa Fluor-555 phalloidin.

IMPORTANT: For western blot, incubate membrane with diluted primary Ab in 5% w/v milk , 1X TBS, 0.1% Tween@20 at 4°C with gentle shaking, overnight.

For Research Use Only. Not for use in diagnostic and therapeutic procedures. Not for resale without express authorization.