

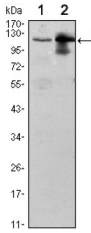
UBE1L Ab

Cat.#: BF0597
Size: 50ul,100ul,200ul

Concn.: 1mg/ml
Source: Mouse

Mol.Wt.: 112kDa
Clonality: Monoclonal

Application:	ELISA 1/10000, WB 1/500 - 1/2000
Reactivity:	Human
Purification:	Affinity-chromatography.
Specificity:	UBE1L Ab detects endogenous levels of total UBE1L.
Immunogen:	Purified recombinant fragment of human UBE1L expressed in E. Coli.
Uniprot:	P41226
Description:	<p>The modification of proteins with ubiquitin is an important cellular mechanism for targeting. Tissue specificity: Expressed in a variety of normal and tumor cell types, but is reduced in lung cancer cell lines abnormal or short-lived proteins for degradation. Ubiquitination involves at least three classes of enzymes: ubiquitin-activating enzymes, or E1s, ubiquitin-conjugating enzymes, or E2s, and ubiquitin-protein ligases, or E3s. This gene encodes a member of the E1 ubiquitin-activating enzyme family. The encoded enzyme is a retinoid target that triggers promyelocytic leukemia (PML)/retinoic acid receptor alpha (RARalpha) degradation and apoptosis in acute promyelocytic leukemia, where it is involved in the conjugation of the ubiquitin-like interferon-stimulated gene 15 protein.</p>
Tissue Specificity:	Expressed in a variety of normal and tumor cell types, but is reduced in lung cancer cell lines.
Similarity:	Belongs to the ubiquitin-activating E1 family.
Storage Condition and Buffer:	Mouse IgG1 in phosphate buffered saline (without Mg ²⁺ and Ca ²⁺), pH 7.4, 150mM NaCl, 0.02% sodium azide and 50% glycerol. Store at -20 °C. Stable for 12 months from date of receipt.



Western blot analysis using UBE1L mouse mAb against Raji (1) and THP-1 (2) cell lysate.

IMPORTANT: For western blot, incubate membrane with diluted primary Ab in 5% w/v milk , 1X TBS, 0.1% Tween@20 at 4°C with gentle shaking, overnight.

For Research Use Only. Not for use in diagnostic and therapeutic procedures. Not for resale without express authorization.