

PPP1CA Ab

Cat.#: BF0683
Size: 50ul,100ul,200ul

Concn.: 1mg/ml
Source: Mouse

Mol.Wt.: 38kDa
Clonality: Monoclonal

Application:	ELISA 1/10000, WB 1/500 - 1/2000
Reactivity:	Human
Purification:	Affinity-chromatography.
Specificity:	PPP1CA Ab detects endogenous levels of total PPP1CA.
Immunogen:	Purified recombinant fragment of human PPP1CA expressed in E. Coli.
Uniprot:	P62136
Description:	The protein encoded by this gene is one of the three catalytic subunits of protein phosphatase 1 (PP1). PP1 is a serine/threonine specific protein phosphatase known to be involved in the regulation of a variety of cellular processes, such as cell division, glycogen metabolism, muscle contractility, protein synthesis, and HIV-1 viral transcription. Increased PP1 activity has been observed in the end stage of heart failure. Studies in both human and mice suggest that PP1 is an important regulator of cardiac function. Mouse studies also suggest that PP1 functions as a suppressor of learning and memory. Three alternatively spliced transcript variants encoding different isoforms have been found for this gene.
Subcellular Location:	Cytoplasm. Nucleus. Nucleus > nucleoplasm. Nucleus > nucleolus. Primarily nuclear and largely excluded from the nucleolus. Highly mobile in cells and can be relocalized through interaction with targeting subunits. NOM1 plays a role in targeting this protein to the nucleolus. In the presence of PPP1R8 relocalizes from the nucleus to nuclear speckles.
Tissue Specificity:	Up-regulated in synovial fluid mononuclear cells and peripheral blood mononuclear cells from patients with rheumatoid arthritis.
Similarity:	Belongs to the PPP phosphatase family. PP-1 subfamily.
Storage Condition and Buffer:	Mouse IgG1 in phosphate buffered saline (without Mg ²⁺ and Ca ²⁺), pH 7.4, 150mM NaCl, 0.02% sodium azide and 50% glycerol.Store at -20 °C.Stable for 12 months from date of receipt.

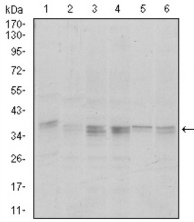


Figure 2: Western blot analysis using PPP1CA mouse mAb against A431 (1), HeLa (2), HepG2 (3), MCF-7 (4), Jurkat (5) and A549 (6) cell lysate.

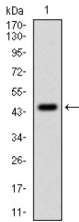


Figure 1: Western blot analysis using PPP1CA mAb against human PPP1CA (AA: 174-330) recombinant protein. (Expected MW is 43.4 kDa)

IMPORTANT: For western blot, incubate membrane with diluted primary Ab in 5% w/v milk , 1X TBS, 0.1% Tween@20 at 4°C with gentle shaking, overnight.

For Research Use Only. Not for use in diagnostic and therapeutic procedures. Not for resale without express authorization.