

## **BECN1 Ab**

Cat.#: BF0688  
Size: 50ul,100ul,200ul

Concn.: 1mg/ml  
Source: Mouse

Mol.Wt.: 60kDa  
Clonality: Monoclonal

Application:	ELISA 1/10000, WB 1/500 - 1/2000, IHC 1/200 - 1/1000, FCM 1/200 - 1/400
Reactivity:	Human
Purification:	Affinity-chromatography.
Specificity:	BECN1 Ab detects endogenous levels of total BECN1.
Immunogen:	Purified recombinant fragment of human BECN1 expressed in E. Coli.
Uniprot:	Q14457
Description:	Beclin-1 participates in the regulation of autophagy and has an important role in development, tumorigenesis, and neurodegeneration (Zhong et al., 2009 (PubMed 19270693)).(supplied by OMIM) . Tissue specificity: Ubiquitous.
Subcellular Location:	Golgi apparatus > trans-Golgi network membrane. Interaction with ATG14 promotes translocation to autophagosomes. Expressed in dendrites and cell bodies of cerebellar Purkinje cells.
Tissue Specificity:	Ubiquitous.
Similarity:	The coiled coil domain can form antiparallel homodimers and mediates dimerization with the coiled coil domains of ATG14 or UVRAG involved in the formation of PI3K complexes.The C-terminal evolutionary conserved domain (ECD) contains poly-Gln-binding domains such as the ATXN3 poly-Gln motif, consistent with structural docking models revealing two highly scored poly-Gln-binding pockets in the ECD (PubMed:28445460). As some binding is observed with BECN1 lacking the ECD, other domains of BECN1 may also interact with ATXN3 (PubMed:28445460).Belongs to the beclin family.
Storage Condition and Buffer:	Mouse IgG1 in phosphate buffered saline (without Mg <sup>2+</sup> and Ca <sup>2+</sup> ), pH 7.4, 150mM NaCl, 0.02% sodium azide and 50% glycerol.Store at -20 °C.Stable for 12 months from date of receipt.

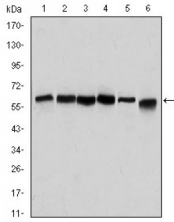
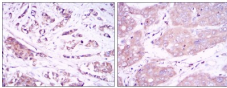
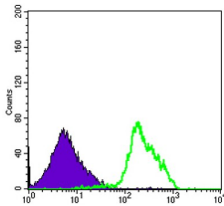


Figure 1: Western blot analysis using BECN1 mouse mAb against Hela (1), A431 (2), MCF-7 (3), RAJI (4), Jurkat (5) and SKBR-3 (6) cell lysate.



Immunohistochemical analysis of paraffin-embedded breast cancer tissues (left) and liver cancer tissues (right) using BECN1 mouse mAb with DAB staining.



Flow cytometric analysis of RAJI cells using BECN1 mouse mAb (green) and negative control (purple).

**IMPORTANT:** For western blot, incubate membrane with diluted primary Ab in 5% w/v milk , 1X TBS, 0.1% Tween@20 at 4°C with gentle shaking, overnight.

For Research Use Only. Not for use in diagnostic and therapeutic procedures. Not for resale without express authorization.