

DKK1 Ab

Cat.#: BF0699
Size: 50ul,100ul,200ul

Concn.: 1mg/ml
Source: Mouse

Mol.Wt.: 28.7kDa
Clonality: Monoclonal

Application:	ELISA 1/10000, WB 1/500 - 1/2000
Reactivity:	Human
Purification:	Affinity-chromatography.
Specificity:	DKK1 Ab detects endogenous levels of total DKK1.
Immunogen:	Purified recombinant fragment of human DKK1 expressed in E. Coli.
Uniprot:	O94907
Description:	DKK1: dickkopf homolog 1 (<i>Xenopus laevis</i>), also known as SK. Entrez Protein NP_036374. DKK1 is a member of the dickkopf family. It is a secreted protein with two cysteine rich regions and is involved in embryonic development through its inhibition of the WNT signaling pathway. Elevated levels of DKK1 in bone marrow plasma and peripheral blood is associated with the presence of osteolytic bone lesions in patients with multiple myeloma.
Subcellular Location:	Secreted.
Tissue Specificity:	Placenta.
Similarity:	The C-terminal cysteine-rich domain mediates interaction with LRP5 and LRP6.Belongs to the dickkopf family.
Storage Condition and Buffer:	Mouse IgG1 in phosphate buffered saline (without Mg ²⁺ and Ca ²⁺), pH 7.4, 150mM NaCl, 0.02% sodium azide and 50% glycerol.Store at -20 °C.Stable for 12 months from date of receipt.

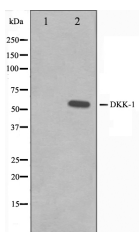


Figure 1: Western blot analysis using DKK1 mouse mAb against HEK293 (1) and DKK1-hlgGfc transfected HEK293 cell lysate (2).

in 5% w/v milk , 1X TBS, 0.1% Tween@20 at 4°C with gentle shaking,
overnight.

For Research Use Only. Not for use in diagnostic and therapeutic
procedures. Not for resale without express authorization.