

Beta II tubulin Ab

Cat.#: BF0716 Concn.: 1mg/ml Mol.Wt.: 55kDa
 Size: 50ul,100ul,200ul Source: Mouse Clonality: Monoclonal

Application: WB(1:1000-1:10000), IP(1:200)

Reactivity: Human,Mouse,Rat

Purification: Affinity-chromatography.

Specificity: Beta II tubulin Ab detects endogenous levels of Beta II tubulin.

Immunogen: Purified recombinant fragment of human Beta II tubulin expressed in E. Coli.

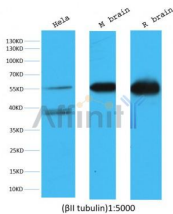
Uniprot: Q13885

Subcellular Location: Cytoskeleton;

Tissue Specificity: High expression in brain, where it represents 30% of all beta-tubulins.

Similarity: Belongs to the tubulin family.

Storage Condition and Buffer: Mouse IgG1 in phosphate buffered saline (without Mg²⁺ and Ca²⁺), pH 7.4, 150mM NaCl, 0.02% sodium azide and 50% glycerol.Store at -20 °C.Stable for 12 months from date of receipt.



Western blot analysis of extracts from various samples, using Beta II tubulin mouse monoclonal Ab.

IMPORTANT: For western blot, incubate membrane with diluted primary Ab in 5% w/v milk, 1X TBS, 0.1% Tween@20 at 4°C with gentle shaking, overnight.

For Research Use Only. Not for use in diagnostic and therapeutic procedures. Not for resale without express authorization.