

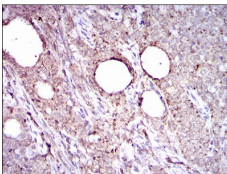
ALDH2 Ab

Cat.#: BF1000
Size: 50ul,100ul,200ul

Concn.: 1mg/ml
Source: Mouse

Mol.Wt.: 56.3kDa
Clonality: Monoclonal

Application:	WB 1/500 - 1/2000
Reactivity:	Human,Mouse,Rat
Purification:	affinity purification.
Specificity:	ALDH2 Ab detects endogenous levels of total ALDH2.
Immunogen:	Purified recombinant fragment of human ALDH2 (AA: 317-517) expressed in E. Coli.
Uniprot:	P05091
Description:	This protein belongs to the aldehyde dehydrogenase family of proteins. Aldehyde dehydrogenase is the second enzyme of the major oxidative pathway of alcohol metabolism. Two major liver isoforms of aldehyde dehydrogenase, cytosolic and mitochondrial, can be distinguished by their electrophoretic mobilities, kinetic properties, and subcellular localizations
Subcellular Location:	Mitochondrion matrix.
Similarity:	Belongs to the aldehyde dehydrogenase family.
Storage Condition and Buffer:	4°C; -20°C for long term storage Ascitic fluid containing 0.03% sodium azide.



Immunohistochemical analysis of paraffin-embedded cervical cancer tissues using ALDH2 mouse mAb with DAB staining.

IMPORTANT: For western blot, incubate membrane with diluted primary Ab in 5% w/v milk , 1X TBS, 0.1% Tween@20 at 4°C with gentle shaking, overnight.

For Research Use Only. Not for use in diagnostic and therapeutic procedures. Not for resale without express authorization.