

Ubiquitin Mouse Monoclonal Ab

[Images\(6\)](#)

| | | |
|---------------|-----------------|-----------------------------|
| Cat.#: BF8034 | Concn.: ~1mg/ml | Mol.Wt.: 8kD,16kD,24kD,32kD |
| Size: 100ul | Source: Mouse | Clonality: Monoclonal |

Application: IHC 1:50-1:200, WB 1:500-1:2000, IF/ICC 1:100-1:500
 *The optimal dilutions should be determined by the end user.

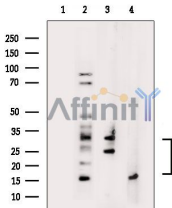
Reactivity: Human,Mouse,Rat

Storage: Mouse IgG1 in phosphate buffered saline (without Mg²⁺ and Ca²⁺), pH 7.4, 150mM NaCl, 0.02% sodium azide and 50% glycerol. Store at -20 °C. Stable for 12 months from date of receipt.

Purification: Affinity-chromatography.

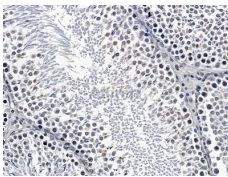
Immunogen: A synthesized peptide derived from human Ubiquitin.

Uniprot: P62987



Western blot analysis of extracts from various samples, using Annexin A2 Mouse Monoclonal Ab.

Lane 1: 293 cells treated with blocking peptide;
 Lane 2: 293 cells;
 Lane 3: mouse kidney tissue.
 Lane 4: rat heart tissue.



BF8034 at 1/100 staining rat testis tissue by IHC-P. The sample was formaldehyde fixed and a heat mediated antigen retrieval step in citrate buffer was performed. The sample was then blocked and incubated with the primary Ab at 4°C overnight. An HRP conjugated anti-mouse Ab was used as the secondary Ab.

IMPORTANT: For western blot, incubate membrane with diluted primary Ab in 5% w/v milk , 1X TBS, 0.1% Tween@20 at 4°C with gentle shaking, overnight.

For Research Use Only. Not for use in diagnostic and therapeutic procedures. Not for resale without express authorization.