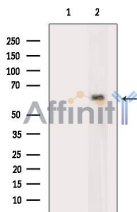


# CYP1B1 Mouse Monoclonal Ab

[Images\(1\)](#)

Cat.#: BF8078	Concn.: ~1mg/ml	Mol.Wt.: 61kDa
Size: 100ul	Source: Mouse	Clonality: Monoclonal

Application:	WB 1:1000-1:10000 *The optimal dilutions should be determined by the end user.
Reactivity:	Human,Mouse,Rat
Storage:	Mouse IgG1 in phosphate buffered saline (without Mg <sup>2+</sup> and Ca <sup>2+</sup> ), pH 7.4, 150mM NaCl, 0.02% sodium azide and 50% glycerol. Store at -20 °C. Stable for 12 months from date of receipt.
Purification:	Affinity-chromatography.
Immunogen:	A synthesized peptide derived from human CYP1B1, corresponding to a region within the internal amino acids.
Uniprot:	Q16678
Description:	Cytochrome P450 1B1 (CYP1B1) is a key enzyme involved in the production of potentially carcinogenic estrogen metabolites and the activation of environmental carcinogens and is the predominant member of the CYP1 family expressed in normal breast tissue and breast cancer. Estrogen has been proposed to trigger breast cancer development via an initiating mechanism involving its metabolite, catechol estrogen (CE). CYP1B1 catalyzes the conversion of 17-beta-estradiol to the catechol estrogen metabolites 2-OH-E2 and 4-OH-E2 which have both been postulated to be involved in mammary carcinogenesis. Genetic polymorphisms in CYP1B1 may play an important role in human prostate carcinogenesis as well.



Western blot analysis of extracts from mouse brain tissue, using CYP1B1 Mouse Monoclonal Ab. The lane on the left was treated with blocking-peptides.

**IMPORTANT:** For western blot, incubate membrane with diluted primary Ab in 5% w/v milk , 1X TBS, 0.1% Tween@20 at 4°C with gentle shaking, overnight.

For Research Use Only. Not for use in diagnostic and therapeutic procedures. Not for resale without express authorization.