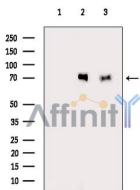


AIFM1 Mouse Monoclonal Ab

[Images\(1\)](#)

Cat.#: BF8082	Concn.: ~1mg/ml	Mol.Wt.: 66kDa
Size: 100ul	Source: Mouse	Clonality: Monoclonal

Application:	WB 1:5000-1:5000000 *The optimal dilutions should be determined by the end user.
Reactivity:	Human,Mouse,Rat
Storage:	Mouse IgG1 in phosphate buffered saline (without Mg ²⁺ and Ca ²⁺), pH 7.4, 150mM NaCl, 0.02% sodium azide and 50% glycerol. Store at -20 °C. Stable for 12 months from date of receipt.
Purification:	Affinity-chromatography.
Immunogen:	A synthesized peptide derived from human AIFM1, corresponding to a region within C-terminal amino acids.
Uniprot:	O95831
Description:	This gene encodes a flavoprotein essential for nuclear disassembly in apoptotic cells, and it is found in the mitochondrial intermembrane space in healthy cells. Induction of apoptosis results in the translocation of this protein to the nucleus where it affects chromosome condensation and fragmentation. In addition, this gene product induces mitochondria to release the apoptogenic proteins cytochrome c and caspase-9. Mutations in this gene cause combined oxidative phosphorylation deficiency 6, which results in a severe mitochondrial encephalomyopathy. Alternative splicing results in multiple transcript variants. A related pseudogene has been identified on chromosome 10.



Western blot analysis of extracts from various samples, using AIFM1 Mouse Monoclonal Ab.

Lane 1: rat heart tissue treated with blocking-peptides,
 Lane 2: rat heart tissue,
 Lane 3: mouse liver tissue.

IMPORTANT: For western blot, incubate membrane with diluted primary Ab in 5% w/v milk, 1X TBS, 0.1% Tween@20 at 4°C with gentle shaking, overnight.

For Research Use Only. Not for use in diagnostic and therapeutic procedures. Not for resale without express authorization.