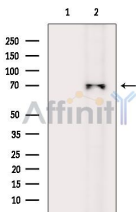


Tyrosine Hydroxylase Mouse Monoclonal Ab

[Images\(2\)](#)

Cat.#: BF8114	Concn.: ~1mg/ml	Mol.Wt.: 60kDa
Size: 100ul	Source: Mouse	Clonality: Monoclonal

Application:	WB 1:1000-1:5000 *The optimal dilutions should be determined by the end user.
Reactivity:	Human,Mouse,Rat
Storage:	Mouse IgG1 in phosphate buffered saline (without Mg ²⁺ and Ca ²⁺), pH 7.4, 150mM NaCl, 0.02% sodium azide and 50% glycerol. Store at -20 °C. Stable for 12 months from date of receipt.
Purification:	Affinity-chromatography.
Immunogen:	A synthesized peptide derived from human TyrHydroxylase around the site of Ser40.
Uniprot:	P07101
Description:	Tyrosine hydroxylase (EC 1.14.16.2) is involved in the conversion of phenylalanine to dopamine. As the rate-limiting enzyme in the synthesis of catecholamines, tyrosine hydroxylase has a key role in the physiology of adrenergic neurons.



Western blot analysis of extracts from Mouse brain, using Tyrosine Hydroxylase Mouse Monoclonal Ab. The lane on the left was treated with blocking peptide.

IMPORTANT: For western blot, incubate membrane with diluted primary Ab in 5% w/v milk , 1X TBS, 0.1% Tween@20 at 4°C with gentle shaking, overnight.

For Research Use Only. Not for use in diagnostic and therapeutic procedures. Not for resale without express authorization.