

VEGFR1 Mouse Monoclonal Ab

[Images\(2\)](#)

Cat.#: BF8184	Concn.: ~1mg/ml	Mol.Wt.: 180 kDa
Size: 100ul	Source: Mouse	Clonality: Monoclonal

Application: WB 1:1000-1:5000
 *The optimal dilutions should be determined by the end user.

Reactivity: Human,Mouse,Rat

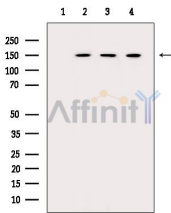
Storage: Mouse IgG1 in phosphate buffered saline (without Mg²⁺ and Ca²⁺), pH 7.4, 150mM NaCl, 0.02% sodium azide and 50% glycerol. Store at -20 °C. Stable for 12 months from date of receipt.

Purification: Affinity-chromatography.

Immunogen: A synthesized peptide derived from human VEGFR1

Uniprot: P17948

Description: Oncogene FLT belongs to the src gene family and is related to oncogene ROS (MIM 165020). Like other members of this family, it shows tyrosine protein kinase activity that is important for the control of cell proliferation and differentiation. The sequence structure of the FLT gene resembles that of the FMS gene (MIM 164770); hence, Yoshida et al. proposed the name FLT as an acronym for FMS-like tyrosine kinase.



Western blot analysis of extracts from various samples, using VEGFR1 Mouse Monoclonal Ab.

- Lane 1: Mouse testis, blocked with antigen-specific peptides.
- Lane 2: Mouse testis.
- Lane 3: HeLa cells.
- Lane 4: Hepg2 cells.

IMPORTANT: For western blot, incubate membrane with diluted primary Ab in 5% w/v milk , 1X TBS, 0.1% Tween@20 at 4°C with gentle shaking, overnight.

For Research Use Only. Not for use in diagnostic and therapeutic procedures. Not for resale without express authorization.