

CD6 Mouse Monoclonal Ab

[Images\(2\)](#)

Cat.#: BF8202 Concn.: ~1mg/ml Mol.Wt.: 72 kDa
Size: 100ul Source: Mouse Clonality: Monoclonal

Application: WB 1:1000-1:5000
 *The optimal dilutions should be determined by the end user.

Reactivity: Human,Mouse

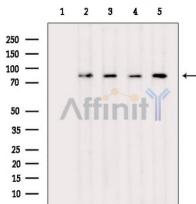
Storage: Mouse IgG1 in phosphate buffered saline (without Mg²⁺ and Ca²⁺), pH 7.4, 150mM NaCl, 0.02% sodium azide and 50% glycerol. Store at -20 °C. Stable for 12 months from date of receipt.

Purification: Affinity-chromatography.

Immunogen: A synthesized peptide derived from human CD6, corresponding to a region within the internal amino acids.

Uniprot: P30203

Description: Expressed by thymocytes, mature T-cells, a subset of B-cells known as B-1 cells, and by some cells in the brain.



Western blot analysis of extracts from various samples, using CD6 Mouse Monoclonal Ab.

- Lane 1: B16f10-luc cells, blocked with antigen-specific peptides.
- Lane 2: B16f10-luc cells.
- Lane 3: Ec304 cells.
- Lane 4: Hela cells.
- Lane 5: Hepg2 cells.

IMPORTANT: For western blot, incubate membrane with diluted primary Ab in 5% w/v milk , 1X TBS, 0.1% Tween@20 at 4°C with gentle shaking, overnight.

For Research Use Only. Not for use in diagnostic and therapeutic procedures. Not for resale without express authorization.