

## ADRB2 Mouse Monoclonal Ab

[Images\(2\)](#)

Cat.#: BF8223                                      Concn.: ~1mg/ml                                      Mol.Wt.: 47kDa  
Size: 100ul    Source: Mouse    Clonality: Monoclonal

Application:                                      WB 1:1000-1:5000  
\*The optimal dilutions should be determined by the end user.

Reactivity:                                        Human,Mouse,Rat

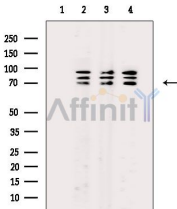
Storage:    Mouse IgG1 in phosphate buffered saline (without Mg<sup>2+</sup> and Ca<sup>2+</sup>), pH 7.4, 150mM NaCl, 0.02% sodium azide and 50% glycerol. Store at -20 °C. Stable for 12 months from date of receipt.

Purification:                                      Affinity-chromatography.

Immunogen:                                        A synthesized peptide derived from human ADRB2, corresponding to a region within C-terminal amino acids.

Uniprot:    P07550

Description:                                        This gene encodes beta-2-adrenergic receptor which is a member of the G protein-coupled receptor superfamily. This receptor is directly associated with one of its ultimate effectors, the class C L-type calcium channel Ca(V)1.2.



Western blot analysis of extracts from various samples, using ADRB2 Mouse Monoclonal Ab.

Lane 1: Ec304 cells, blocked with antigen-specific peptides.

Lane 2: Ec304 cells.

Lane 3: A549 cells.

Lane 4: HeLa cells.

**IMPORTANT:** For western blot, incubate membrane with diluted primary Ab in 5% w/v milk , 1X TBS, 0.1% Tween@20 at 4°C with gentle shaking, overnight.

For Research Use Only. Not for use in diagnostic and therapeutic procedures. Not for resale without express authorization.