

alpha SMA Ab

Cat.#: BF9212 Concn.: 1mg/ml Mol.Wt.: 42kDa
Size: 50ul,100ul,200ul,1ml Source: Mouse Clonality: Monoclonal

Application: WB 1:1000-10000 IP 1:200 IF 1:200

Reactivity: Human,Mouse,Rat

Purification: affinity purification.

Specificity: The α Skeletal Muscle Actin mouse monoclonal Ab can recognize endogenous α Skeletal Muscle Actin proteins.

Immunogen: A Mouse monoclonal antibody is prepared by immunizing recombinant protein.

Uniprot: P62736

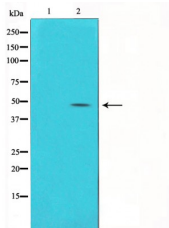
Description: Actin, alpha skeletal muscle is a protein that in humans is encoded by the ACTA1 gene. Actin alpha 1 which is expressed in skeletal muscle is one of six different actin isoforms which have been identified. Actins are highly conserved proteins that are involved in cell motility, structure and integrity. Alpha actins are a major constituent of the contractile apparatus

Subcellular Location: Cytoplasm > cytoskeleton.

Tissue Specificity: Up-regulated in response to enterovirus 71 (EV71) infection.

Similarity: Belongs to the actin family.

Storage Condition and Buffer: 1mg/ml in PBS, pH 7.4.



Western blot analysis of Hela with alpha SMA Ab diluted at 1:5,000.

IMPORTANT: For western blot, incubate membrane with diluted primary Ab in 5% w/v milk , 1X TBS, 0.1% Tween@20 at 4°C with gentle shaking, overnight.



Affinity Biosciences
website: www.affbiotech.com
order: order@affbiotech.com

procedures. Not for resale without express authorization.