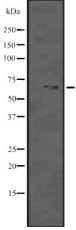

Phospho-Becn-1 (Ser93/96) Ab

Cat.#: DF2983
Size: 100ul,200ulConcn.: 1mg/ml
Source: RabbitMol.Wt.: 60KD
Clonality: Polyclonal

Application:	WB 1:1000-3000
Reactivity:	Human,Mouse,Rat
Purification:	The Ab is from purified rabbit serum by affinity purification via sequential chromatography on phospho- and non-phospho-peptide affinity columns.
Specificity:	Phospho-Becn-1 (Ser93/96) Ab detects endogenous levels of Becn-1 only when phosphorylated at Ser93/96
Immunogen:	A synthesized peptide derived from human Phospho-Becn-1 (Ser93/96)
Uniprot:	Q14457
Subcellular Location:	Golgi apparatus > trans-Golgi network membrane. Interaction with ATG14 promotes translocation to autophagosomes. Expressed in dendrites and cell bodies of cerebellar Purkinje cells.
Tissue Specificity:	Ubiquitous.
Similarity:	The coiled coil domain can form antiparallel homodimers and mediates dimerization with the coiled coil domains of ATG14 or UVRAG involved in the formation of PI3K complexes.The C-terminal evolutionary conserved domain (ECD) contains poly-Gln-binding domains such as the ATXN3 poly-Gln motif, consistent with structural docking models revealing two highly scored poly-Gln-binding pockets in the ECD (PubMed:28445460). As some binding is observed with BECN1 lacking the ECD, other domains of BECN1 may also interact with ATXN3 (PubMed:28445460).Belongs to the beclin family.
Storage Condition and Buffer:	Rabbit IgG in phosphate buffered saline , pH 7.4, 150mM NaCl, 0.02% sodium azide and 50% glycerol.Store at -20 °C.Stable for 12 months from date of receipt



Western blot analysis Phospho-Becnin-1 (Ser93/96) using K562 whole cell lysates

IMPORTANT: For western blot, incubate membrane with diluted Ab in 5% w/v milk , 1X TBS, 0.1% Tween@20 at 4°C with gentle shaking, overnight.

For Research Use Only. Not for use in diagnostic and therapeutic procedures. Not for resale without express authorization.