

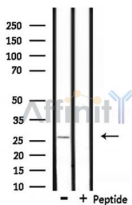
## UBTD2 Antibody

Cat.#: DF8733  
 Size: 100ul,200ul

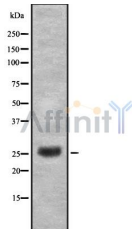
Concn.: 1mg/ml  
 Source: Rabbit

Mol.Wt.: 26 kDa  
 Clonality: Polyclonal

- Application:** WB 1:1000-3000, IF/ICC 1:100-1:500, ELISA(peptide)  
 1:20000-1:40000  
 \*The optimal dilutions should be determined by the end user.
- Reactivity:** Human,Mouse,Rat
- Purification:** The antiserum was purified by peptide affinity chromatography using SulfoLink™ Coupling Resin (Thermo Fisher Scientific).
- Specificity:** UBTD2 Antibody detects endogenous levels of total UBTD2.
- Immunogen:** A synthesized peptide derived from human UBTD2, corresponding to a region within C-terminal amino acids.
- Uniprot:** Q8WUN7
- Storage Condition and Buffer:** Rabbit IgG in phosphate buffered saline , pH 7.4, 150mM NaCl, 0.02% sodium azide and 50% glycerol.Store at -20 °C.Stable for 12 months from date of receipt.



Western blot analysis of extracts from rat heart, using UBTD2 Antibody.



Western blot analysis UBTD2 using HeLa whole cell lysates



DF8733 staining HepG2 by IF/ICC. The sample were fixed with PFA and permeabilized in 0.1% Triton X-100,then blocked in 10% serum for 45 minutes at 25°C. The primary antibody was diluted at 1/200 and incubated with the sample for 1 hour at 37°C. An Alexa Fluor 594 conjugated goat anti-rabbit IgG (H+L) Ab, diluted at 1/600, was used as the secondary antibody.

**IMPORTANT:** For western blot, incubate membrane with diluted primary Ab in 5% w/v milk , 1X TBS, 0.1% Tween@20 at 4°C with gentle shaking, overnight.

For Research Use Only. Not for use in diagnostic and therapeutic procedures. Not for resale without express authorization.