

TENS3 Antibody

Cat.#: DF8838
Size: 100ul,200ul

Concn.: 1mg/ml
Source: Rabbit

Mol.Wt.: 155 kDa
Clonality: Polyclonal

Application: WB 1:1000-3000, ELISA(peptide) 1:20000-1:40000
*The optimal dilutions should be determined by the end user.

Reactivity: Human

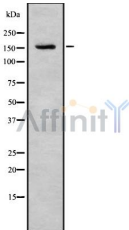
Purification: The antiserum was purified by peptide affinity chromatography using SulfoLink™ Coupling Resin (Thermo Fisher Scientific).

Specificity: TENS3 Antibody detects endogenous levels of total TENS3.

Immunogen: A synthesized peptide derived from human TENS3, corresponding to a region within the internal amino acids.

Uniprot: Q68CZ2

Storage Condition and Buffer: Rabbit IgG in phosphate buffered saline , pH 7.4, 150mM NaCl, 0.02% sodium azide and 50% glycerol.Store at -20 °C.Stable for 12 months from date of receipt.



Western blot analysis of TENS3 using K562 whole cell lysates

IMPORTANT: For western blot, incubate membrane with diluted primary Ab in 5% w/v milk , 1X TBS, 0.1% Tween@20 at 4°C with gentle shaking, overnight.

For Research Use Only. Not for use in diagnostic and therapeutic procedures. Not for resale without express authorization.