

PDCD7 Antibody

Cat.#: DF9029
 Size: 100ul,200ul

Concn.: 1mg/ml
 Source: Rabbit

Mol.Wt.: 55 kDa
 Clonality: Polyclonal

Application: WB 1:1000-3000, ELISA(peptide) 1:20000-1:40000
 *The optimal dilutions should be determined by the end user.

Reactivity: Human,Mouse

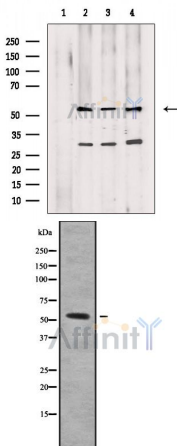
Purification: The antiserum was purified by peptide affinity chromatography using SulfoLink™ Coupling Resin (Thermo Fisher Scientific).

Specificity: PDCD7 Antibody detects endogenous levels of total PDCD7.

Immunogen: A synthesized peptide derived from human PDCD7, corresponding to a region within C-terminal amino acids.

Uniprot: Q8N8D1

Storage Condition and Buffer: Rabbit IgG in phosphate buffered saline , pH 7.4, 150mM NaCl, 0.02% sodium azide and 50% glycerol.Store at -20 °C.Stable for 12 months from date of receipt.



Western blot analysis of extracts from various samples, using PDCD7 Antibody.
 Lane 1: Raji cells, blocked with antigen-specific peptides,
 Lane 2: Raji cells,
 Lane 3: COLO205 cells,
 Lane 4: HepG2 cells.

Western blot analysis of PDCD7 using K562 whole cell lysates

IMPORTANT: For western blot, incubate membrane with diluted primary Ab in 5% w/v milk , 1X TBS, 0.1% Tween@20 at 4°C with gentle shaking, overnight.

For Research Use Only. Not for use in diagnostic and therapeutic procedures. Not for resale without express authorization.