

ADAM28 Antibody

Cat.#: DF9163
Size: 100ul,200ul

Concn.: 1mg/ml
Source: Rabbit

Mol.Wt.: 87kDa
Clonality: Polyclonal

Application: WB 1:1000-3000, ELISA(peptide) 1:20000-1:40000
*The optimal dilutions should be determined by the end user.

Reactivity: Human,Rat,Monkey

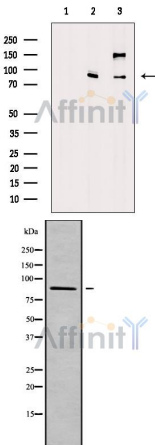
Purification: The antiserum was purified by peptide affinity chromatography using SulfoLink™ Coupling Resin (Thermo Fisher Scientific).

Specificity: ADAM28 Antibody detects endogenous levels of total ADAM28.

Immunogen: A synthesized peptide derived from human ADAM28, corresponding to a region within C-terminal amino acids.

Uniprot: Q9UKQ2

Storage Condition and Buffer: Rabbit IgG in phosphate buffered saline , pH 7.4, 150mM NaCl, 0.02% sodium azide and 50% glycerol.Store at -20 °C.Stable for 12 months from date of receipt.



Western blot analysis of extracts from various samples, using ADAM28 Antibody.

Lane 1: MDA-MB-231 cells lysates treated with blocking peptide;
Lane 2: MDA-MB-231 cells;
Lane 3: VERO cells.

Western blot analysis of ADAM28 using COLO205 whole cell lysates

IMPORTANT: For western blot, incubate membrane with diluted primary Ab in 5% w/v milk , 1X TBS, 0.1% Tween@20 at 4°C with gentle shaking, overnight.