

## ABCA12 Antibody

Cat.#: DF9244  
 Size: 100ul,200ul

Concn.: 1mg/ml  
 Source: Rabbit

Mol.Wt.: 293kDa  
 Clonality: Polyclonal

**Application:** WB 1:1000-3000, ELISA(peptide) 1:20000-1:40000  
 \*The optimal dilutions should be determined by the end user.

**Reactivity:** Human

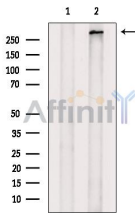
**Purification:** The antiserum was purified by peptide affinity chromatography using SulfoLink™ Coupling Resin (Thermo Fisher Scientific).

**Specificity:** ABCA12 Antibody detects endogenous levels of total ABCA12.

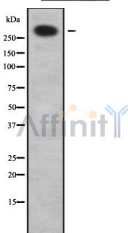
**Immunogen:** A synthesized peptide derived from human ABCA12, corresponding to a region within C-terminal amino acids.

**Uniprot:** Q86UK0

**Storage Condition and Buffer:** Rabbit IgG in phosphate buffered saline , pH 7.4, 150mM NaCl, 0.02% sodium azide and 50% glycerol.Store at -20 °C.Stable for 12 months from date of receipt.



Western blot analysis of extracts from DU145 cells, using ABCA12 Antibody. The lane on the left was treated with blocking peptide.



Western blot analysis of ABCA12 using LOVO whole cell lysates

**IMPORTANT:** For western blot, incubate membrane with diluted primary Ab in 5% w/v milk , 1X TBS, 0.1% Tween@20 at 4°C with gentle shaking, overnight.