

## ABCA7 Antibody

Cat.#: DF9247  
Size: 100ul,200ul

Concn.: 1mg/ml  
Source: Rabbit

Mol.Wt.: 234kDa  
Clonality: Polyclonal

**Application:** WB 1:1000-3000, ELISA(peptide) 1:20000-1:40000  
\*The optimal dilutions should be determined by the end user.

**Reactivity:** Human

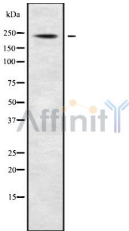
**Purification:** The antiserum was purified by peptide affinity chromatography using SulfoLink™ Coupling Resin (Thermo Fisher Scientific).

**Specificity:** ABCA7 Antibody detects endogenous levels of total ABCA7.

**Immunogen:** A synthesized peptide derived from human ABCA7, corresponding to a region within the internal amino acids.

**Uniprot:** Q8IZY2

**Storage Condition and Buffer:** Rabbit IgG in phosphate buffered saline , pH 7.4, 150mM NaCl, 0.02% sodium azide and 50% glycerol.Store at -20 °C.Stable for 12 months from date of receipt.



Western blot analysis of ABCA7 using Jurkat whole cell lysates

**IMPORTANT:** For western blot, incubate membrane with diluted primary Ab in 5% w/v milk , 1X TBS, 0.1% Tween@20 at 4°C with gentle shaking, overnight.

For Research Use Only. Not for use in diagnostic and therapeutic procedures. Not for resale without express authorization.