

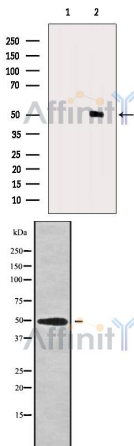
B3GALT2 Antibody

Cat.#: DF9269
 Size: 100ul,200ul

Concn.: 1mg/ml
 Source: Rabbit

Mol.Wt.: 49 kDa
 Clonality: Polyclonal

- Application:** WB 1:1000-3000, ELISA(peptide) 1:20000-1:40000
 *The optimal dilutions should be determined by the end user.
- Reactivity:** Human,Mouse,Monkey
- Purification:** The antiserum was purified by peptide affinity chromatography using SulfoLink™ Coupling Resin (Thermo Fisher Scientific).
- Specificity:** B3GALT2 Antibody detects endogenous levels of total B3GALT2.
- Immunogen:** A synthesized peptide derived from human B3GALT2, corresponding to a region within C-terminal amino acids.
- Uniprot:** O43825
- Storage Condition and Buffer:** Rabbit IgG in phosphate buffered saline , pH 7.4, 150mM NaCl, 0.02% sodium azide and 50% glycerol.Store at -20 °C.Stable for 12 months from date of receipt.



Western blot analysis of extracts from VERO, using B3GALT2 Antibody. The lane on the left was treated with blocking peptide.

Western blot analysis of B3GALT2 using Jurkat whole cell lysates

IMPORTANT: For western blot, incubate membrane with diluted primary Ab in 5% w/v milk , 1X TBS, 0.1% Tween@20 at 4°C with gentle shaking, overnight.