

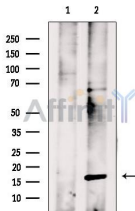
PPP3R1 Antibody

Cat.#: DF9292
Size: 100ul,200ul

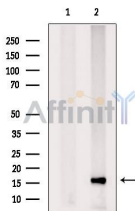
Concn.: 1mg/ml
Source: Rabbit

Mol.Wt.: 19 kDa, 16 kDa
Clonality: Polyclonal

Application:	WB 1:1000-3000, ELISA(peptide) 1:20000-1:40000 *The optimal dilutions should be determined by the end user.
Reactivity:	Human,Mouse,Rat
Purification:	The antiserum was purified by peptide affinity chromatography using SulfoLink™ Coupling Resin (Thermo Fisher Scientific).
Specificity:	PPP3R1 Antibody detects endogenous levels of total PPP3R1.
Immunogen:	A synthesized peptide derived from human PPP3R1, corresponding to a region within the internal amino acids.
Uniprot:	P63098
Storage Condition and Buffer:	Rabbit IgG in phosphate buffered saline , pH 7.4, 150mM NaCl, 0.02% sodium azide and 50% glycerol.Store at -20 °C.Stable for 12 months from date of receipt.

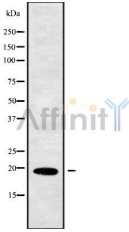


Western blot analysis of extracts from B16F10 cells, using PPP3R1 Antibody. The lane on the left was treated with blocking peptide.



Western blot analysis of extracts from C6 cells, using PPP3R1 Antibody. The lane on the left was treated with blocking peptide.

Observed bands: 16 kDa.



Western blot analysis of PPP3R1 using MCF7 whole cell lysates

IMPORTANT: For western blot, incubate membrane with diluted primary Ab in 5% w/v milk , 1X TBS, 0.1% Tween@20 at 4°C with gentle shaking, overnight.

For Research Use Only. Not for use in diagnostic and therapeutic procedures. Not for resale without express authorization.