

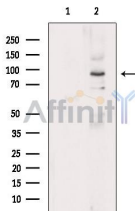
CAPN3 Antibody

Cat.#: DF9320
Size: 100ul,200ul

Concn.: 1mg/ml
Source: Rabbit

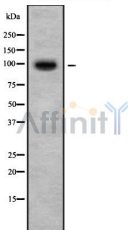
Mol.Wt.: 94kDa,110kDa
Clonality: Polyclonal

Application:	WB 1:1000-3000, IHC 1:200, ELISA(peptide) 1:20000-1:40000 *The optimal dilutions should be determined by the end user.
Reactivity:	Human,Mouse,Rat
Purification:	The antiserum was purified by peptide affinity chromatography using SulfoLink™ Coupling Resin (Thermo Fisher Scientific).
Specificity:	CAPN3 Antibody detects endogenous levels of total CAPN3.
Immunogen:	A synthesized peptide derived from human CAPN3, corresponding to a region within the internal amino acids.
Uniprot:	P20807
Storage Condition and Buffer:	Rabbit IgG in phosphate buffered saline , pH 7.4, 150mM NaCl, 0.02% sodium azide and 50% glycerol.Store at -20 °C.Stable for 12 months from date of receipt.

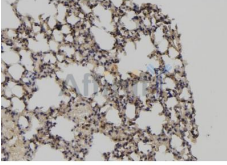


Western blot analysis of extracts from Rat lung, using CAPN3 Antibody. The lane on the left was treated with blocking peptide.

Observed bands: 110 kDa.



Western blot analysis of CAPN3 using NIH-3T3 whole cell lysates



DF9320 at 1/100 staining Mouse lung tissue by IHC-P. The sample was formaldehyde fixed and a heat mediated antigen retrieval step in citrate buffer was performed. The sample was then blocked and incubated with the antibody for 1.5 hours at 22°C. An HRP conjugated goat anti-rabbit antibody was used as the secondary antibody.

IMPORTANT: For western blot, incubate membrane with diluted primary Ab in 5% w/v milk , 1X TBS, 0.1% Tween@20 at 4°C with gentle shaking, overnight.

For Research Use Only. Not for use in diagnostic and therapeutic procedures. Not for resale without express authorization.