

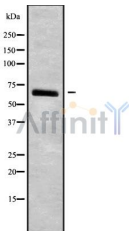
NT5C2 Ab

Cat.#: DF9431
Size: 100ul,200ul

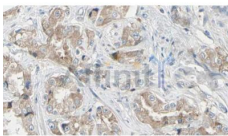
Concn.: 1mg/ml
Source: Rabbit

Mol.Wt.: 65 kDa
Clonality: Polyclonal

Application:	WB 1:1000-3000 IHC 1:200
Reactivity:	Human,Mouse
Purification:	The antiserum was purified by peptide affinity chromatography using SulfoLink™ Coupling Resin (Thermo Fisher Scientific).
Specificity:	NT5C2 Ab detects endogenous levels of total NT5C2.
Immunogen:	A synthesized peptide derived from human NT5C2.
Uniprot:	P49902
Subcellular Location:	Cytoplasm.
Similarity:	Belongs to the 5'(3')-deoxyribonucleotidase family.
Storage Condition and Buffer:	Rabbit IgG in phosphate buffered saline , pH 7.4, 150mM NaCl, 0.02% sodium azide and 50% glycerol.Store at -20 °C.Stable for 12 months from date of receipt.



Western blot analysis NT5C2 using NIH-3T3 whole cell lysates



DF9431 at 1/100 staining Human prostate tissue by IHC-P. The sample was formaldehyde fixed and a heat mediated antigen retrieval step in citrate buffer was performed. The sample was then blocked and incubated with the Ab for 1.5 hours at 22°C. An HRP conjugated goat anti-rabbit Ab was used as the secondary.

IMPORTANT: For western blot, incubate membrane with diluted primary Ab in 5% w/v milk , 1X TBS, 0.1% Tween@20 at 4°C with gentle shaking, overnight.



Affinity Biosciences

website:www.affbiotech.com

order:order@affbiotech.com

For Research Use Only. Not for use in diagnostic and therapeutic procedures. Not for resale without express authorization.