

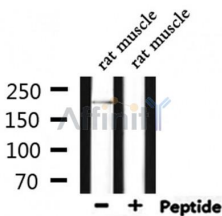
DOCK7 Ab

Cat.#: DF9433
 Size: 100ul,200ul

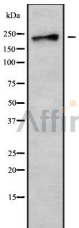
Concn.: 1mg/ml
 Source: Rabbit

Mol.Wt.: 242kDa
 Clonality: Polyclonal

- Application:** WB 1:1000-3000
- Reactivity:** Human,Mouse,Rat
- Purification:** The antiserum was purified by peptide affinity chromatography using SulfoLink™ Coupling Resin (Thermo Fisher Scientific).
- Specificity:** DOCK7 Ab detects endogenous levels of total DOCK7.
- Immunogen:** A synthesized peptide derived from human DOCK7.
- Uniprot:** Q96N67
- Subcellular Location:** Cell projection, axon. Note=Enriched in the developing axons of hippocampal neurons.
- Tissue Specificity:** Widely expressed.
- Similarity:** The DHR-2 domain mediates GEF activity.Belongs to the DOCK family.
- Storage Condition and Buffer:** Rabbit IgG in phosphate buffered saline , pH 7.4, 150mM NaCl, 0.02% sodium azide and 50% glycerol.Store at -20 °C.Stable for 12 months from date of receipt.



Western blot analysis of extracts from rat muscle, using DOCK7 Ab.



Western blot analysis of DOCK7 using HT29 whole cell lysates

IMPORTANT: For western blot, incubate membrane with diluted primary Ab in 5% w/v milk , 1X TBS, 0.1% Tween@20 at 4°C with gentle shaking, overnight.

For Research Use Only. Not for use in diagnostic and therapeutic procedures. Not for resale without express authorization.