

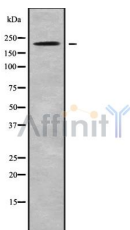
UBR2 Ab

Cat.#: DF9491
Size: 100ul,200ul

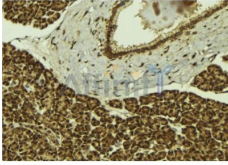
Concn.: 1mg/ml
Source: Rabbit

Mol.Wt.: 201kDa
Clonality: Polyclonal

Application:	WB 1:1000-3000 IHC 1:200
Reactivity:	Human,Mouse
Purification:	The antiserum was purified by peptide affinity chromatography using SulfoLink™ Coupling Resin (Thermo Fisher Scientific).
Specificity:	UBR2 Ab detects endogenous levels of total UBR2.
Immunogen:	A synthesized peptide derived from human UBR2.
Uniprot:	Q8I WV8
Subcellular Location:	Nuclear
Tissue Specificity:	Broadly expressed, with highest levels in skeletal muscle, kidney and pancreas. Present in acinar cells of the pancreas (at protein level).
Similarity:	The RING-H2 zinc finger is an atypical RING finger with a His ligand in place of the fourth Cys of the classical motif.The UBR-type zinc finger forms a pocket that mediates recognition of type 1 N-degrons. It exhibits preference for Arginine in first position, has poor affinity for histidine, and doesn't bind acetylated peptides.Belongs to the UBR1 family.
Storage Condition and Buffer:	Rabbit IgG in phosphate buffered saline , pH 7.4, 150mM NaCl, 0.02% sodium azide and 50% glycerol.Store at -20 °C.Stable for 12 months from date of receipt.



Western blot analysis UBR2 using HeLa whole cell lysates



DF9491 at 1/100 staining Mouse pancreas tissue by IHC-P. The sample was formaldehyde fixed and a heat mediated antigen retrieval step in citrate buffer was performed. The sample was then blocked and incubated with the Ab for 1.5 hours at 22°C. An HRP conjugated goat anti-rabbit Ab was used as the secondary.

IMPORTANT: For western blot, incubate membrane with diluted primary Ab in 5% w/v milk , 1X TBS, 0.1% Tween@20 at 4°C with gentle shaking, overnight.

For Research Use Only. Not for use in diagnostic and therapeutic procedures. Not for resale without express authorization.