

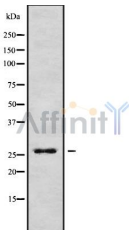
PRRX2 Ab

Cat.#: DF9729
Size: 100ul,200ul

Concn.: 1mg/ml
Source: Rabbit

Mol.Wt.: 27 kDa
Clonality: Polyclonal

Application:	WB 1:1000-3000 IHC 1:200
Reactivity:	Human,Mouse,Rat
Purification:	The antiserum was purified by peptide affinity chromatography using SulfoLink™ Coupling Resin (Thermo Fisher Scientific).
Specificity:	PRRX2 Ab detects endogenous levels of total PRRX2.
Immunogen:	A synthesized peptide derived from human PRRX2.
Uniprot:	Q99811
Subcellular Location:	Nucleus.
Tissue Specificity:	In fetal skin, highest expression found in cells of mesodermal origin within the dermal papilla of the developing hair shaft. Not detected in epidermis or dermis. In adult skin, weakly expressed within the basal layers of the epidermis. Not expressed in dermis.
Similarity:	Belongs to the paired homeobox family.
Storage Condition and Buffer:	Rabbit IgG in phosphate buffered saline , pH 7.4, 150mM NaCl, 0.02% sodium azide and 50% glycerol.Store at -20 °C.Stable for 12 months from date of receipt.



Western blot analysis of PRRX2 using Jurkat whole cell lysates



DF9729 at 1/100 staining Rat heart tissue by IHC-P. The sample was formaldehyde fixed and a heat mediated antigen retrieval step in citrate buffer was performed. The sample was then blocked and incubated with the Ab for 1.5 hours at 22°C. An HRP conjugated goat anti-rabbit Ab was used as the secondary.

IMPORTANT: For western blot, incubate membrane with diluted primary Ab in 5% w/v milk , 1X TBS, 0.1% Tween@20 at 4°C with gentle shaking, overnight.

For Research Use Only. Not for use in diagnostic and therapeutic procedures. Not for resale without express authorization.