

PRDM10 Ab

Cat.#: DF9772
Size: 100ul,200ul

Concn.: 1mg/ml
Source: Rabbit

Mol.Wt.: 130 kDa
Clonality: Polyclonal

Application: WB 1:1000-3000 IHC 1:200

Reactivity: Human,Mouse,Rat

Purification: The antiserum was purified by peptide affinity chromatography using SulfoLink™ Coupling Resin (Thermo Fisher Scientific).

Specificity: PRDM10 Ab detects endogenous levels of total PRDM10.

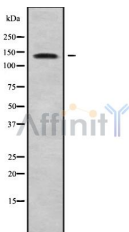
Immunogen: A synthesized peptide derived from human PRDM10.

Uniprot: Q9NQV6

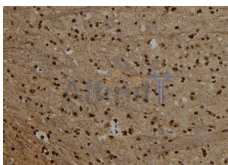
Subcellular Location: Nucleus.

Similarity: The SET domain is degenerated, suggesting that it has lost methyltransferase activity.Belongs to the class V-like SAM-binding methyltransferase superfamily.

Storage Condition and Buffer: Rabbit IgG in phosphate buffered saline , pH 7.4, 150mM NaCl, 0.02% sodium azide and 50% glycerol.Store at -20 °C.Stable for 12 months from date of receipt.



Western blot analysis of PRDM10 using K562 whole cell lysates



DF9772 at 1/100 staining Rat brain tissue by IHC-P. The sample was formaldehyde fixed and a heat mediated antigen retrieval step in citrate buffer was performed. The sample was then blocked and incubated with the Ab for 1.5 hours at 22°C. An HRP conjugated goat anti-rabbit Ab was used as the secondary.

IMPORTANT: For western blot, incubate membrane with diluted primary Ab in 5% w/v milk , 1X TBS, 0.1% Tween@20 at 4°C with gentle shaking,



Affinity Biosciences
website: www.affbiotech.com
order: order@affbiotech.com

overnight.

For Research Use Only. Not for use in diagnostic and therapeutic procedures. Not for resale without express authorization.