

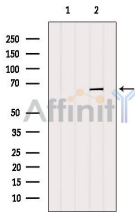
## PRPF38B Ab

Cat.#: DF9775  
Size: 100ul,200ul

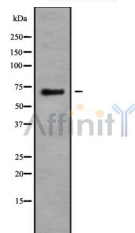
Concn.: 1mg/ml  
Source: Rabbit

Mol.Wt.: 64 kDa  
Clonality: Polyclonal

Application:	WB 1:1000-3000
Reactivity:	Human,Mouse,Rat
Purification:	The antiserum was purified by peptide affinity chromatography using SulfoLink™ Coupling Resin (Thermo Fisher Scientific).
Specificity:	PRPF38B Ab detects endogenous levels of total PRPF38B.
Immunogen:	A synthesized peptide derived from human PRPF38B.
Uniprot:	Q5VTL8
Subcellular Location:	Nucleus;
Similarity:	Belongs to the PRP38 family.
Storage Condition and Buffer:	Rabbit IgG in phosphate buffered saline , pH 7.4, 150mM NaCl, 0.02% sodium azide and 50% glycerol.Store at -20 °C.Stable for 12 months from date of receipt.



Western blot analysis of extracts from Mouse muscle, using PRPF38B Ab. The lane on the left was treated with blocking peptide.



Western blot analysis of PRPF38B using Jurkat whole cell lysates

**IMPORTANT:** For western blot, incubate membrane with diluted primary Ab in 5% w/v milk , 1X TBS, 0.1% Tween@20 at 4°C with gentle shaking, overnight.



**Affinity Biosciences**

website:[www.affbiotech.com](http://www.affbiotech.com)

order:[order@affbiotech.com](mailto:order@affbiotech.com)

---

For Research Use Only. Not for use in diagnostic and therapeutic procedures. Not for resale without express authorization.