

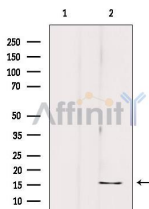
PPP1R14B Ab

Cat.#: DF9778
Size: 100ul,200ul

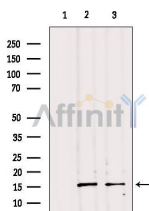
Concn.: 1mg/ml
Source: Rabbit

Mol.Wt.: 16 kDa
Clonality: Polyclonal

Application:	WB 1:1000-3000
Reactivity:	Human,Mouse,Rat
Purification:	The antiserum was purified by peptide affinity chromatography using SulfoLink™ Coupling Resin (Thermo Fisher Scientific).
Specificity:	PPP1R14B Ab detects endogenous levels of total PPP1R14B.
Immunogen:	A synthesized peptide derived from human PPP1R14B.
Uniprot:	Q96C90
Subcellular Location:	Cytoplasm.
Tissue Specificity:	Ubiquitous. Expressed at low levels.
Similarity:	Belongs to the PP1 inhibitor family.
Storage Condition and Buffer:	Rabbit IgG in phosphate buffered saline , pH 7.4, 150mM NaCl, 0.02% sodium azide and 50% glycerol.Store at -20 °C.Stable for 12 months from date of receipt.



Western blot analysis of extracts from 293, using PPP1R14B Ab. Lane 1 was treated with the blocking peptide.



Western blot analysis of extracts from various samples, using PPP1R14B Ab.

Lane 1: 293 treated with blocking peptide.
Lane 2: 293;
Lane 3: hybridoma cells;



Western blot analysis of PPP1R14B using MCF7 whole cell lysates

IMPORTANT: For western blot, incubate membrane with diluted primary Ab in 5% w/v milk , 1X TBS, 0.1% Tween@20 at 4°C with gentle shaking, overnight.

For Research Use Only. Not for use in diagnostic and therapeutic procedures. Not for resale without express authorization.