

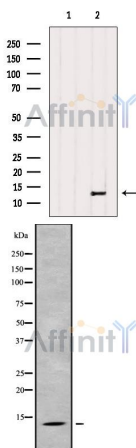
PPP1R1C Ab

Cat.#: DF9779
Size: 100ul,200ul

Concn.: 1mg/ml
Source: Rabbit

Mol.Wt.: 12 kDa
Clonality: Polyclonal

Application:	WB 1:1000-3000
Reactivity:	Human,Mouse
Purification:	The antiserum was purified by peptide affinity chromatography using SulfoLink™ Coupling Resin (Thermo Fisher Scientific).
Specificity:	PPP1R1C Ab detects endogenous levels of total PPP1R1C.
Immunogen:	A synthesized peptide derived from human PPP1R1C.
Uniprot:	Q8WV17
Tissue Specificity:	Expressed in heart, skeletal muscle, liver and testis (at protein level).
Similarity:	Belongs to the protein phosphatase inhibitor 1 family.
Storage Condition and Buffer:	Rabbit IgG in phosphate buffered saline , pH 7.4, 150mM NaCl, 0.02% sodium azide and 50% glycerol.Store at -20 °C.Stable for 12 months from date of receipt.



Western blot analysis of extracts from HeLa, using PPP1R1C Ab. The lane on the left was treated with blocking peptide.

Western blot analysis of PPP1R1C using HeLa whole cell lysates

IMPORTANT: For western blot, incubate membrane with diluted primary Ab in 5% w/v milk , 1X TBS, 0.1% Tween@20 at 4°C with gentle shaking, overnight.



Affinity Biosciences

website: www.affbiotech.com

order: order@affbiotech.com

For Research Use Only. Not for use in diagnostic and therapeutic procedures. Not for resale without express authorization.