

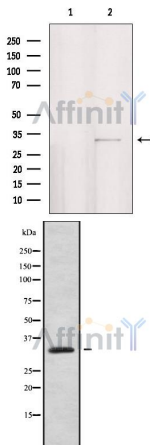
PPP1R3D Ab

Cat.#: DF9780
 Size: 100ul,200ul

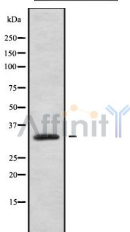
Concn.: 1mg/ml
 Source: Rabbit

Mol.Wt.: 33 kDa
 Clonality: Polyclonal

- Application:** WB 1:1000-3000
- Reactivity:** Human,Mouse,Rat
- Purification:** The antiserum was purified by peptide affinity chromatography using SulfoLink™ Coupling Resin (Thermo Fisher Scientific).
- Specificity:** PPP1R3D Ab detects endogenous levels of total PPP1R3D.
- Immunogen:** A synthesized peptide derived from human PPP1R3D.
- Uniprot:** O95685
- Tissue Specificity:** Expressed in all tissues tested. High expression in skeletal muscle and heart.
- Similarity:** The CBM21 domain is known to be involved in the localization to glycogen and is characteristic of some regulatory subunit of phosphatase complexes.
- Storage Condition and Buffer:** Rabbit IgG in phosphate buffered saline , pH 7.4, 150mM NaCl, 0.02% sodium azide and 50% glycerol.Store at -20 °C.Stable for 12 months from date of receipt.



Western blot analysis of extracts from HepG2, using PPP1R3D Ab. Lane 1 was treated with the blocking peptide.



Western blot analysis of PPP1R3D using Jurkat whole cell lysates

IMPORTANT: For western blot, incubate membrane with diluted primary Ab

in 5% w/v milk , 1X TBS, 0.1% Tween@20 at 4°C with gentle shaking, overnight.

For Research Use Only. Not for use in diagnostic and therapeutic procedures. Not for resale without express authorization.