

PTPRB Ab

Cat.#: DF9841
Size: 100ul,200ul

Concn.: 1mg/ml
Source: Rabbit

Mol.Wt.: 224kDa
Clonality: Polyclonal

Application: WB 1:1000-3000

Reactivity: Human

Purification: The antiserum was purified by peptide affinity chromatography using SulfoLink™ Coupling Resin (Thermo Fisher Scientific).

Specificity: PTPRB Ab detects endogenous levels of total PTPRB.

Immunogen: A synthesized peptide derived from human PTPRB.

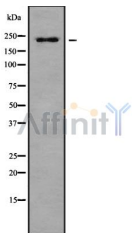
Uniprot: P23467

Subcellular Location: Membrane.

Tissue Specificity: Up-regulated by hypoxia.

Similarity: Belongs to the protein-tyrosine phosphatase family. Receptor class 3 subfamily.

Storage Condition and Buffer: Rabbit IgG in phosphate buffered saline , pH 7.4, 150mM NaCl, 0.02% sodium azide and 50% glycerol.Store at -20 °C.Stable for 12 months from date of receipt.



Western blot analysis of PTPRB using HuvEc whole cell lysates

IMPORTANT: For western blot, incubate membrane with diluted primary Ab in 5% w/v milk , 1X TBS, 0.1% Tween@20 at 4°C with gentle shaking, overnight.

For Research Use Only. Not for use in diagnostic and therapeutic procedures. Not for resale without express authorization.