

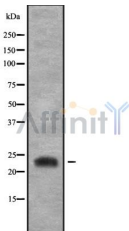
## RGS4 Ab

Cat.#: DF9849  
Size: 100ul,200ul

Concn.: 1mg/ml  
Source: Rabbit

Mol.Wt.: 23 kDa  
Clonality: Polyclonal

Application:	WB 1:1000-3000
Reactivity:	Human,Mouse,Rat
Purification:	The antiserum was purified by peptide affinity chromatography using SulfoLink™ Coupling Resin (Thermo Fisher Scientific).
Specificity:	RGS4 Ab detects endogenous levels of total RGS4.
Immunogen:	A synthesized peptide derived from human RGS4.
Uniprot:	P49798
Tissue Specificity:	Expressed in brain and heart. Expressed in brain at protein level. Expressed in prefrontal and visual cortex. Isoform 4 and isoform 5 are expressed ubiquitously. Isoform 1, isoform 2 and isoform 3 are not expressed in the cerebellum.
Storage Condition and Buffer:	Rabbit IgG in phosphate buffered saline , pH 7.4, 150mM NaCl, 0.02% sodium azide and 50% glycerol.Store at -20 °C.Stable for 12 months from date of receipt.



Western blot analysis of RGS4 using COS7 whole cell lysates

**IMPORTANT:** For western blot, incubate membrane with diluted primary Ab in 5% w/v milk , 1X TBS, 0.1% Tween@20 at 4°C with gentle shaking, overnight.

For Research Use Only. Not for use in diagnostic and therapeutic procedures. Not for resale without express authorization.